

# Dry Bath / Heating Block | DB1



## ✓ High Uniformity & Long Life Cycle

Apply Molding Heater to heating system

## ✓ High-Quality Insulation

Realize Stable Condition and Protection of Test Sample

## ✓ Clear Type Poly Carbonate Lid

Realize Stable Condition and Protection of Test Sample with Clear View

## ✓ High Safety

Over-Load & Heat, Over Current Protection

※ 48 Holes Block in the picture is not included as a standard delivery. Please order the included set model or select the block to be used.

## ✓ Touch Button

Excellent design focused on the convenience of users

## ✓ High Fidelity LCD Display

Operation Icon of high intuitiveness and Easy-to-read backlit LCD are equipped

## Flexible Design

Maxi. Capacity with 48ea 2.0ml Micro Centrifuge tubes



# Specification & Ordering

## Digital Models

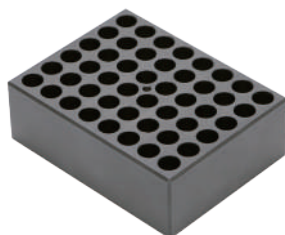


Ordering No.	Model Name	Description
LT.DB01010	DB1	Dry Bath, Digital, up to 150°C, without Heating Block, 230V
LT.DB01011		Dry Bath, Digital, up to 150°C, without Heating Block, 120V
LT.DB01012	DB1-Set	Package Set, Dry Bath with Heating Block(DBCT48), for 48 hole x 1.5ml tubes, 230V
LT.DB01013		Package Set, Dry Bath with Heating Block(DBCT48), for 48 hole x 1.5ml tubes, 120V

48 Holes Block in the picture is not included as a standard delivery. Please order the included set model or select the block to be used.

Model		DB1	DB1-Set
Temp.	Range	Ambient +5 to 150°C	
	Accuracy	±0.1°C at 37°C ±0.2°C at 90°C ±0.4°C at 135°C	
	Resolution	0.1°C-Display, 0.1°C-Control	
Heat up Speed		Approx. 5°C/min	
Controller		Digital Fuzzy Controller with Touch Button & Jog Dial	
Timer		99hr 59min., ±1min. increments	
Display		Full Digital LCD Display with Back-Light Function	
Permissible Temp. & Humidity		5°C~40°C, <80%	
Heater		Molded Heater	
Power Consumption		300W	
Material	Unit Case	ABS	
	Block Case	PPS	
	Block	Anodized Aluminum	
Others		Incl. PC Cover for sample	
Safety Devices		Over Temp Protection, Over Current Protector, Sensor Error Detector	
Dimensions (w x d x h) & Net Weight		165 X 250X 145mm, 1.6Kg	165 X 250X 145mm, 2.4Kg
Packing Size (w x d x h) & Gross Weight		230 x 310 x 260mm, 2.2Kg	230 x 310 x 260mm, 3.0Kg
Power Supply		1 Phase, AC 120V, 60Hz or AC 230V, 50/60 HZ	

## Accessories



DBCT48

Ordering No.	Model Name	Description
LT.DB00010	DBCT96	Micro centrifuge tubes Block for 0.2ml Tubes, Ø6 x 96 hole (h16mm)
LT.DB00011	DBCT63	Micro centrifuge tubes Block for 0.5ml Tubes, Ø7.7 x 63 hole (h29.5mm)
LT.DB00012	DBCT48	Micro centrifuge tubes Block for 1.5ml Tubes, Ø11 x 48 hole (h36mm)
LT.DB00013	DBCT48E	Micro centrifuge tubes Block for 2.0ml Tubes, Ø11 x 48 hole (h38.7mm)
LT.DB00020	DBCT15	Conical bottom centrifuge tubes Block for 15ml Tubes, Ø16 x 15 hole (h47mm)
LT.DB00021	DBCT8	Conical bottom centrifuge tubes Block for 50ml Tubes, Ø28.7 x 8 hole (h47mm)
LT.DB00030	DBTT48	Standard test tubes Block, Ø12 x 48 hole (h35mm)
LT.DB00031	DBTT30	Standard test tubes Block, Ø13 x 30 hole (h47mm)
LT.DB00032	DBTT30E	Standard test tubes Block, Ø15 x 30 hole (h47mm)
LT.DB00033	DBTT24	Standard test tubes Block, Ø16.5 x 24 hole (h47mm)
LT.DB00034	DBTT24E	Standard test tubes Block, Ø18 x 24 hole (h47mm)
LT.DB00040	DBET	Block Extraction tool